

2008 Into the Fields Theater Group Report



SAF's Into the Fields interns wrote and performed a new play *La Visita del Campolín* to inspire dialogue and action among farmworkers. The Campolín character is a play on *El Chapulín Colorado*-a popular TV superhero in Mexico. Interns used popular theater techniques and participatory methods for getting farmworkers to talk about housing and health issues that concern them and ways to protect themselves from pesticide exposure. In addition to the performance, SAF provided dinner, spent time with workers and took polaroid photos with them as souvenirs. SAF alum Raul Granados, returned to assist with ITF this summer, using his degree in Theater Arts to direct the theater group.

Farmworker Comments

"I liked it because you try to advise us of the dangers pesticides cause and try to advise us how to treat them. Also on the laws that protect us from the bosses so they don't abuse us."

"Hi, I'm from Nayarit, what you do is very good for everyone who comes here, because with this you can avoid a lot of health problems."

"Yes I liked it and it seems what you are doing is helping us by distracting us a little. Keep on helping more workers."

"I liked it because it helps prevent any type of accident in the work that we do."

Accomplishments

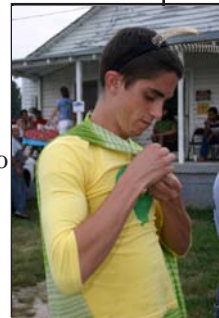
6 performances
(June 23-August 4)

183 workers reached

Performed at labor camps in Greene, Wake, Wilson and Hertford counties in North Carolina

Actors

Alejandra Trejo
Cynthia Herrera
Diana Rosales
Norma Salazar
Rosalva Soto
Sandy Preiss
Yolanda Anguiano



SAF Directors

Laxmi Haynes
Raul Granados

Hosts

Carolina Family Health
Greene Co. Health
Roanoke Chowan Community
Health Care-Ahoskie
Wake Co. Human Services

Funded by

Association of Farmworker
Opportunities Program

Environmental Protection
Agency

Mary Duke Biddle
Foundation

Top: Actors pose for souvenir photo with farmworker; Farmworkers at a performance in Ahoskie, NC by Tony Macias **Bottom:** Actors draw mustaches on at Wake Co. camp by Emma Raynes; Actors sing final song written by Yolanda **Far Right:** Sandy dressing as El Campolín by Emma Raynes

Conversations uncovered workers' major concerns:

- ❖ No A/C, housing lacks fans
- ❖ Workers lack own transportation
- ❖ Overcrowded and isolated housing (8 people per room)
- ❖ Dirty mattresses, slow work
- ❖ Eye infection, insomnia, knee problems, STD concerns
- ❖ Need work clothes and help finding English classes

For information about SAF's Theater group, contact Laxmi Haynes, National Student Organizer 919-660-3660 farmworker_justice@yahoo.com